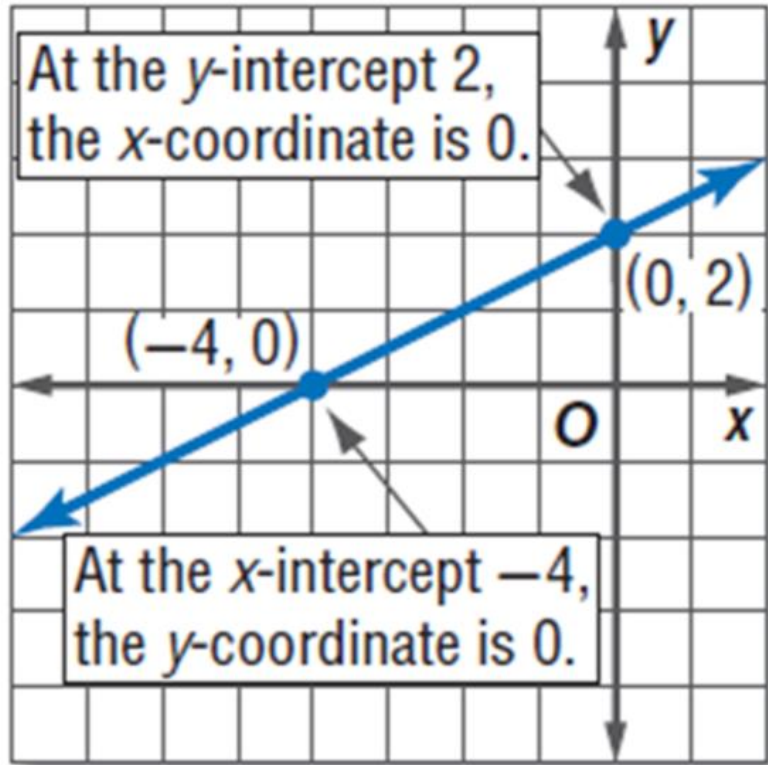


Learning  to graph lines using the x and y intercepts

Vocabulary

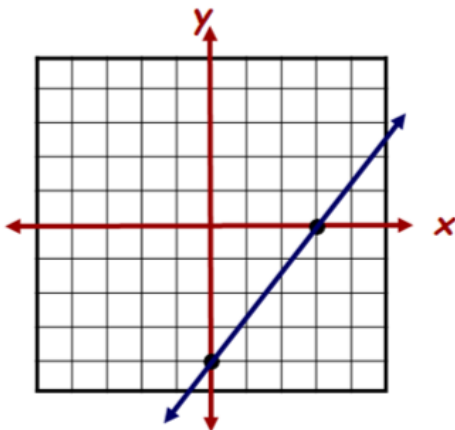
x-intercept:

y-intercept:



Identify the x and y-intercepts

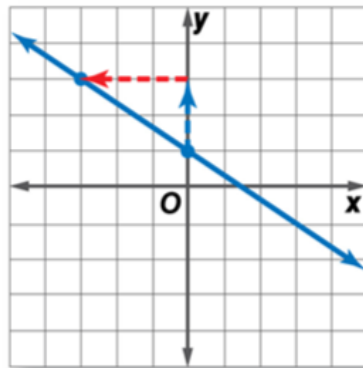
Model:



x-intercept:

y-intercept:

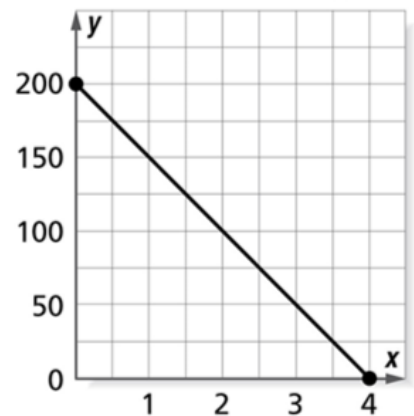
Now You Help:



x-intercept:

y-intercept:

SAVINGS You have \$200 in an account and spend \$50 each week



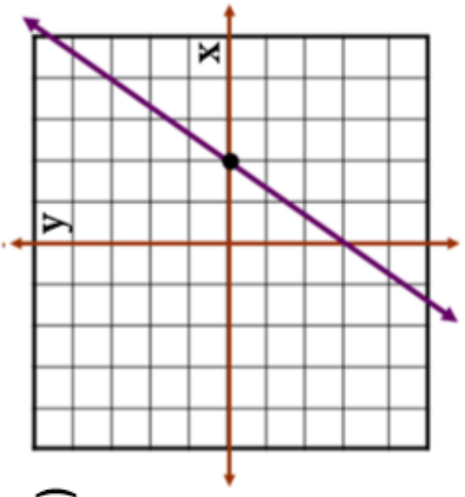
x-intercept:

y-intercept:



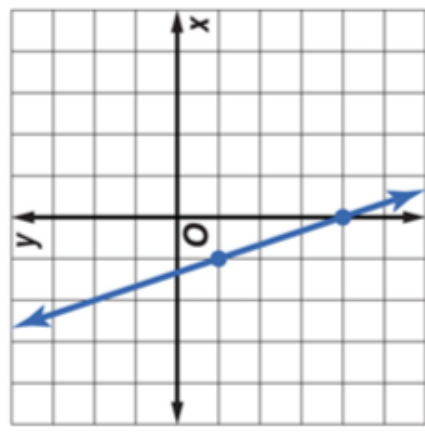
Learning to graph lines using the x and y intercepts

SECTION 1: Choose 1



x-intercept:

y-intercept:



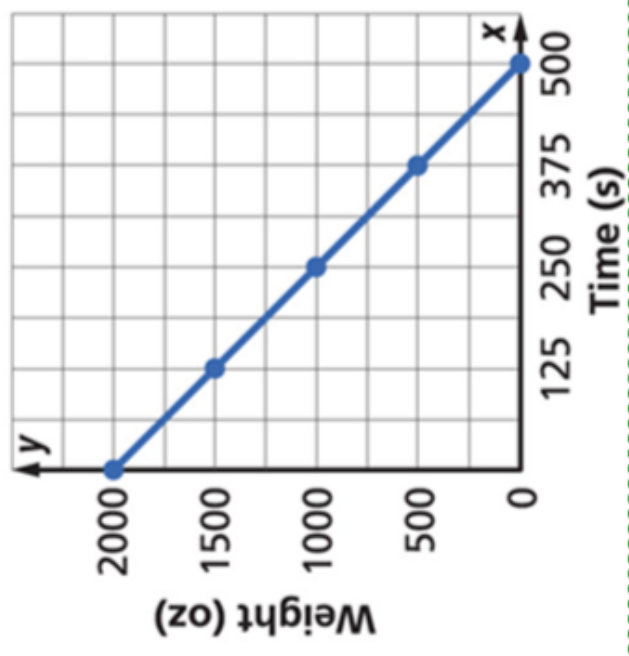
x-intercept:

y-intercept:

SECTION 2: Choose 1

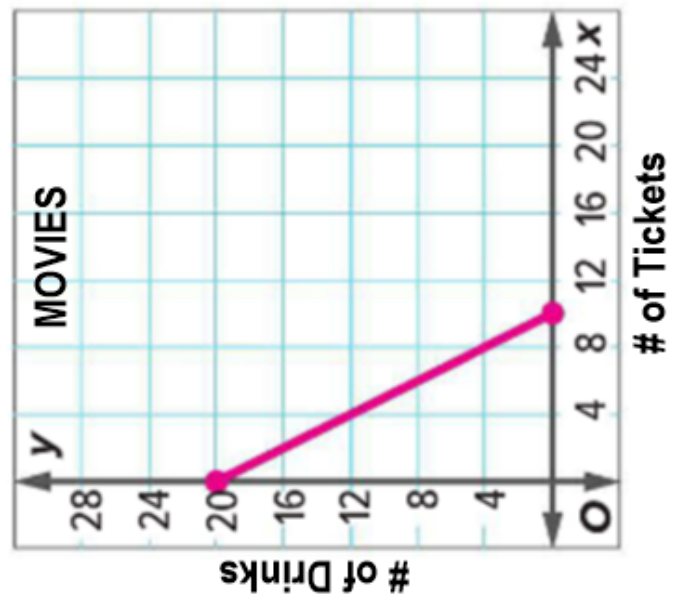
C.) **PEANUT FACTORY** The graph represents a box of peanuts being poured into bags. Identify & Interpret the x & y-intercepts.

x-intercept: _____ **y-intercept:** _____



D.) **MOVIES** You spend \$80 @ the movies. Tickets are \$8 each & drinks are \$4 each. $8x + 4y = 80$

x-intercept: _____ **y-intercept:** _____



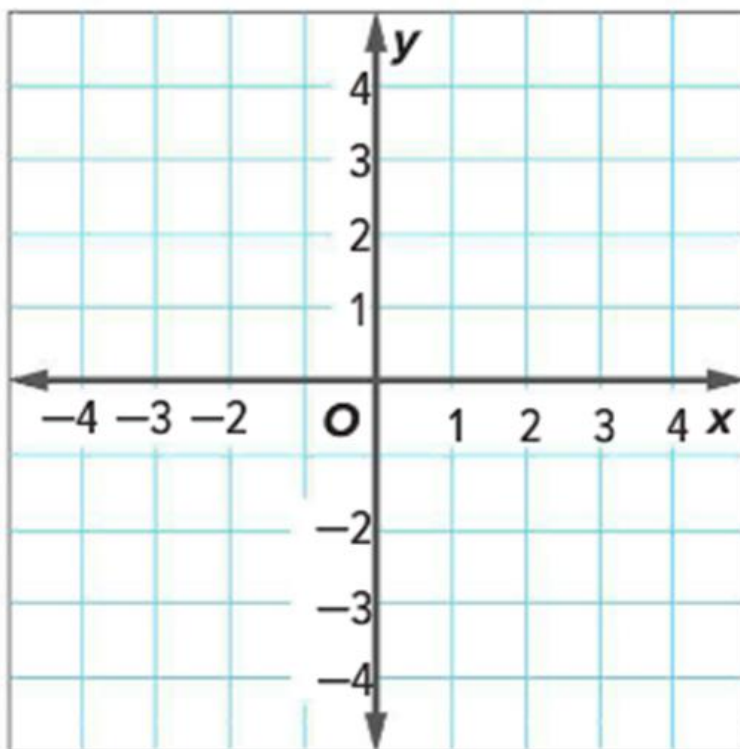
Graph a Line Using Intercepts

Model:

a.) Find y-intercept ($x = 0$)

b.) Find x-intercept ($y = 0$)

$$y = \frac{3}{4}x - 4$$

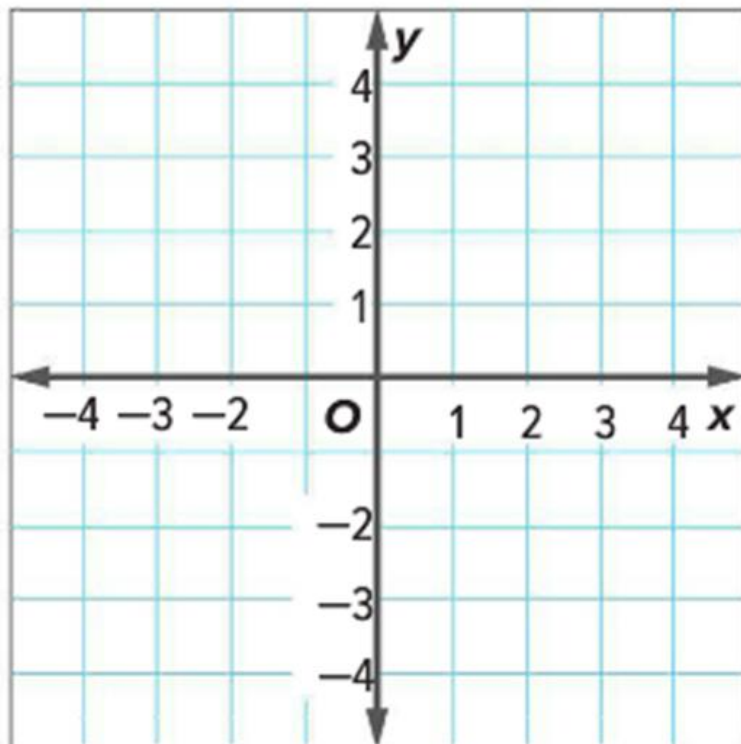


Now You Help:

a.) Find y-intercept ($x = 0$)

b.) Find x-intercept ($y = 0$)

$$2x + 3y = 3$$





to graph lines using the x and y intercepts



Collaborate

Graph a Line Using Intercepts

| | | |
|--|--------------------|--|
| <p>1.) $4x - 6y = 12$ x-intercept</p> | <p>y-intercept</p> | |
| <p>2.) $3x - 2y = 12$ x-intercept</p> | <p>y-intercept</p> | |
| <p>3.) $y = -2x - 7$ x-intercept</p> | <p>y-intercept</p> | |

NAME _____ CLASS _____ DATE _____ CLASS NOTES